

## INDUSTRIAL DISPUTES, AUSTRALIA, APRIL 1994

### MAIN FEATURES

#### In April 1994 -

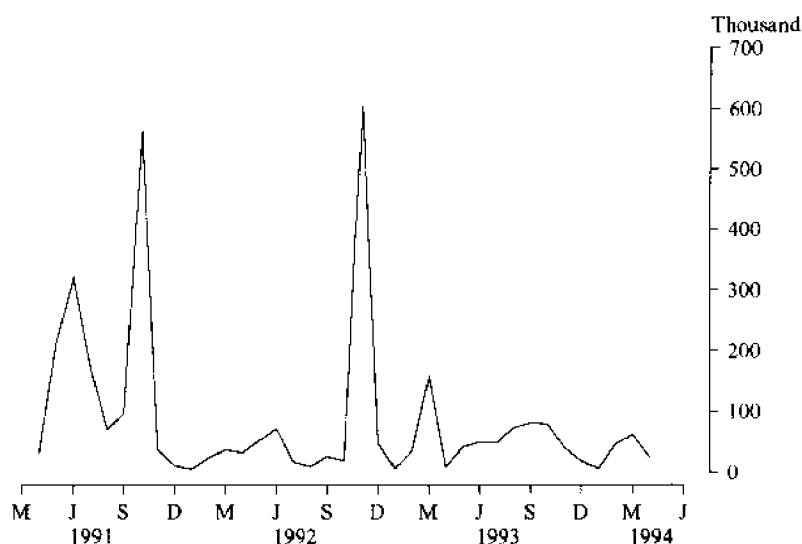
- There were 39 disputes involving 24,400 employees and the loss of 25,600 working days.
- This represents a 58 per cent decrease in working days lost from the previous month (61,300) but a small decrease in the number of employees involved and no change in the number of disputes.
- The Coal Mining industry reported 17,400 working days lost. While this was a decrease of 68 per cent from the previous month it still represented 68 per cent of all time lost for the month.

- New South Wales accounted for 52 per cent of working days lost (13,300), while Queensland accounted for most of the remainder with 29 per cent (7,500).

#### In the twelve months ended April 1994 -

- There were 562 disputes reported involving 369,700 employees and the loss of 569,800 working days. The number of disputes is the lowest recorded for a twelve month period since this series was first compiled in December 1981.

CHART 1. WORKING DAYS LOST, AUSTRALIA



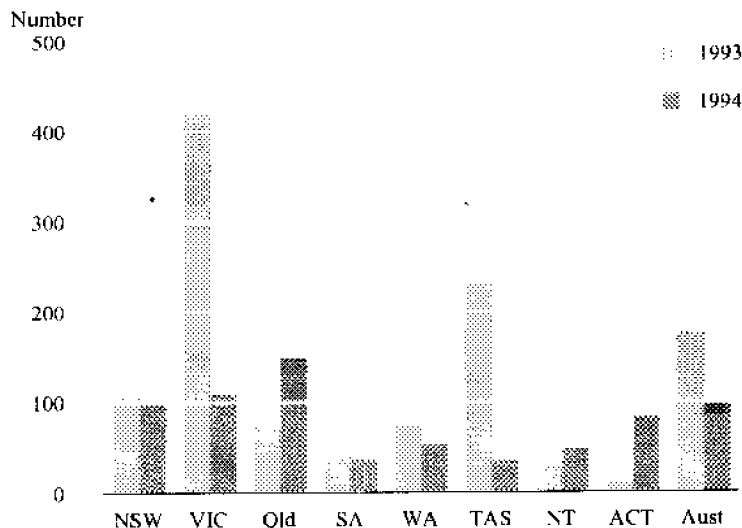
Source: Table 1

#### INQUIRIES

- for further information about statistics in this publication and the availability of related unpublished statistics, contact Arvie Dobson on Melbourne (03) 615 7492 or any ABS State Office.
- for information about other ABS statistics and services please contact Information Services on Melbourne (03) 615 7000 or any ABS State Office.

- The Manufacturing industry (other than Metal products, machinery and equipment) reported 67,100 working days lost, the lowest annual total for this industry since this series was first compiled in December 1981.
- There were 97 working days lost per thousand employees for Australia. This ranged from 35 in Tasmania to 149 in Queensland (refer Chart 2).
- The Coal Mining industry reported 7,040 working days lost per thousand employees, the highest rate for this industry for a twelve month period since October 1989 (7,566).
- The Mining (other than coal) industry reported 318 working days lost per thousand employees, the lowest rate for this industry for a twelve month period since this series was first compiled in December 1981.

CHART 2. WORKING DAYS LOST PER THOUSAND EMPLOYEES,  
12 MONTHS ENDING APRIL 1993 AND 1994



Source: Table 5

## NOTES

Statistics of industrial disputes are compiled mainly from data obtained from employers (both private and public sector) and trade unions concerning individual disputes, and from reports of government authorities.

The statistics relate to disputes which involved stoppages of work in which ten working days or more were lost at the establishments where the stoppages occurred.

Statistics on working days lost per thousand employees are calculated using estimates of employment from the Survey of Employment and Earnings and the Labour Force Survey.

Explanatory Notes and a Glossary are published on pages 6 to 8 of this publication.

IAN CASTLES  
Australian Statistician

TABLE 1. INDUSTRIAL DISPUTES WHICH OCCURRED DURING THE PERIOD: AUSTRALIA(a)

Period	Number of disputes(b)		Employees involved ('000)		Working days lost ('000)	
	Commenced in period	Total(c)	Newly involved(d)	Total(c)		
<i>1993</i>						
February	56	58	37.8	38.2	34.2	
March	62	68	137.7	152.4	156.5	
April	38	46	6.7	8.9	7.6	
May	61	67	39.9	60.0	40.9	
June	57	64	34.8	60.2	50.0	
July	58	66	20.3	41.5	48.6	
August	58	66	55.4	59.6	72.4	
September	44	49	33.2	43.1	81.2	
October	61	70	76.0	80.3	79.5	
November	45	55	33.3	54.4	40.1	
December	32	40	9.6	11.6	19.1	
<i>1994</i>						
January	32	35	4.9	5.1	5.4	
February	39	43	24.6	26.5	45.8	
March	36	39	7.6	26.1	61.3	
April	33	39	10.1	24.4	25.6	
<i>Twelve months ended --</i>						
April	1992	936	949	1,143.3	1,145.5	1,580.5
	1993 r	647	662	989.4	992.4	1,047.1
	1994	556	562	349.6	369.7	569.8
December	1991	1,032	1,036	1,178.9	1,181.6	1,610.6
	1992	726	728	871.3	871.5	941.2
	1993	607	610	489.2	489.6	635.8

(a) More detailed information by State and industry is available on request. (b) Prior to September 1991 disputes affecting more than one industry and/or State have been counted as separate disputes in each industry and State and in the Australian total. From that time such disputes, while still counted separately in each industry and/or State, are counted just once at the broader industry and Australian level. See paragraph 5 of the Explanatory Notes. (c) Refer to paragraph 7 of Glossary. (d) Comprises employees involved in disputes which commenced during the month and additional employees involved in disputes which continued from the previous month.

TABLE 2. INDUSTRIAL DISPUTES WHICH OCCURRED DURING THE PERIOD: INDUSTRY, AUSTRALIA, WORKING DAYS LOST(a) ('000)

Period	Manufacturing									
	Mining		Metal products, machinery and equipment		Const- ruction	Transport and storage; Commu- nication		Community Services	Other industries(b)	All industries
	Coal	Other		Other						
<i>1993</i>										
February	7.3	0.1	8.6	7.1	0.2	0.8	8.5	1.5	34.2	
March	6.1	2.0	103.8	4.7	0.4	2.0	32.6	5.0	156.5	
April	1.9	1.1	0.7	1.3	0.2	0.9	0.5	0.8	7.6	
May	1.2	0.3	2.3	8.1		1.1	13.2	14.8	40.9	
June	3.1	2.0	1.5	11.1	0.2	1.7	6.6	23.7	50.0	
July	2.0	3.4	3.0	9.6	1.5	0.8	0.5	27.7	48.6	
August	1.4	0.1	5.3	13.2	3.5	0.9	41.9	6.1	72.4	
September	43.1	...	5.8	14.8	2.5	4.2	3.8	7.0	81.2	
October	2.8	3.6	12.8	2.0	4.4	1.2	19.0	33.9	79.5	
November	3.1	1.5	6.1	2.5			19.9	7.0	40.1	
December	4.5	0.1	10.0	3.0		0.1	0.6	0.9	19.1	
<i>1994</i>										
January	1.8	0.4	0.7	0.3	0.1	0.5	0.2	1.5	5.4	
February	28.1	1.7	1.4	0.6	0.1	9.0	0.3	4.6	45.8	
March	54.0	—	1.8	0.9	1.7	1.0	1.4	0.4	61.3	
April	17.4	—	1.9	1.0	0.9	0.5	1.5	2.3	25.6	
<i>Twelve months ended --</i>										
April	1992	120.8	47.8	659.3	154.4	102.6	100.4	193.4	201.7	1,580.5
	1993 r	77.5	36.9	227.4	150.9	34.1	79.3	274.6	166.3	1,047.1
	1994	162.6	13.1	52.6	67.1	14.9	21.1	108.8	129.7	569.8
December	1991	129.6	37.1	664.0	169.3	120.7	98.1	201.1	190.7	1,610.6
	1992	76.8	50.8	121.4	154.6	38.4	82.4	238.9	177.7	941.2
	1993	78.6	14.4	160.4	77.7	13.1	15.6	147.5	128.7	635.8

(a) More detailed information by State and industry is available on request. (b) Comprises Agriculture, forestry, fishing and hunting; Electricity, gas and water; Wholesale and retail trade; Finance, property and business services; Public administration and defence; Recreation, personal and other services.

**TABLE 3. INDUSTRIAL DISPUTES WHICH OCCURRED DURING THE PERIOD: STATES AND TERRITORIES, AUSTRALIA.  
WORKING DAYS LOST(a)  
('000)**

<i>Period</i>	<i>NSW</i>	<i>Vic.</i>	<i>Qld</i>	<i>SA</i>	<i>WA</i>	<i>Tas.</i>	<i>NT</i>	<i>ACT</i>	<i>Australia</i>
<i>1993—</i>									
February	12.2	10.0	9.6	1.9	0.4	0.1	—	—	34.2
March	48.3	88.3	10.0	7.7	2.2	—	—	—	156.5
April	2.0	1.8	1.5	0.4	1.8	—	—	—	7.6
May	5.9	23.4	8.0	1.8	1.3	0.4	0.1	0.2	40.9
June	13.6	12.2	10.8	2.0	10.3	0.5	0.2	0.4	50.0
July	14.3	12.2	13.2	2.7	3.8	0.9	1.3	0.3	48.6
August	17.6	24.4	24.2	2.4	3.4	0.4	—	—	72.4
September	38.4	3.3	32.9	3.5	1.5	0.5	—	1.1	81.2
October	10.2	46.0	6.6	3.1	3.2	1.7	0.5	8.3	79.5
November	10.5	23.6	4.8	—	1.3	—	—	—	40.1
December	2.4	11.0	5.3	—	0.1	0.1	—	0.1	19.1
<i>1994—</i>									
January	3.9	0.8	0.1	—	0.5	—	—	—	5.4
February	29.3	1.2	11.8	0.2	2.2	0.2	0.2	0.6	45.8
March	36.7	2.1	20.0	1.1	1.3	0.1	—	—	61.3
April	13.3	1.9	7.5	0.8	1.0	0.7	0.3	0.2	25.6
<i>Twelve months ended—</i>									
April	1992	1,081.6	203.2	109.4	49.0	120.1	11.8	2.7	1,580.5
	1993	214.2	658.7	73.4	20.2	42.7	34.9	1.7	1,047.1
	1994	196.2	162.2	145.0	17.5	29.9	5.3	2.6	569.8
December	1991	1,106.3	209.2	106.6	59.3	119.1	4.4	3.3	1,610.6
	1992	174.3	586.4	66.3	12.2	53.6	43.0	2.7	941.2
	1993	178.3	257.2	128.4	25.6	29.5	4.5	10.3	635.8

(a) State by industry information is available on request

**TABLE 4. INDUSTRIAL DISPUTES WHICH OCCURRED DURING THE PERIOD: INDUSTRY, AUSTRALIA  
WORKING DAYS LOST PER THOUSAND EMPLOYEES FOR THE TWELVE MONTHS ENDED(a)**

<i>Period</i>	<i>Manufacturing</i>								<i>All industries</i>
	<i>Mining</i>		<i>Metal products, machinery and equipment</i>	<i>Other</i>	<i>Construction</i>	<i>Transport and storage; Communication</i>	<i>Community Services</i>	<i>Other industries(b)</i>	
	<i>Coal</i>	<i>Other</i>							
<i>Twelve months ended—</i>									
<i>1990—</i>									
December	4,879	1,631	1,293	212	204	299	151	25	217
<i>1991—</i>									
December	4,507	735	1,820	296	428	237	150	63	265
<i>1992—</i>									
December	2,970	997	352	275	151	214	175	60	158
<i>1993—</i>									
February	3,128	927	369	280	138	216	181	59	159
March	3,063	765	665	283	135	219	202	58	179
April	3,067	718	663	270	134	209	201	56	175
May	2,829	641	669	245	132	209	202	59	174
June	2,904	345	672	239	133	206	184	67	170
July	2,814	419	679	252	138	190	184	77	177
August	2,808	421	693	272	149	190	214	78	188
September	4,440	393	701	291	158	199	215	78	197
October	4,194	445	738	292	175	198	226	90	208
November	3,247	322	454	146	51	99	114	44	112
December	3,288	322	474	141	51	42	108	44	108
<i>1994—</i>									
January	3,306	334	473	141	51	38	107	44	108
February	4,225	379	451	129	50	60	101	45	110
March	6,325	341	151	122	56	57	78	44	94
April	7,040	318	154	122	58	56	79	45	97

(a) See paragraph 4 of the Explanatory Notes. (b) Comprises Agriculture, forestry, fishing and hunting; Electricity, gas and water; Wholesale and retail trade; Finance, property and business services; Public administration and defence; Recreation, personal and other services

TABLE 5. INDUSTRIAL DISPUTES WHICH OCCURRED DURING THE PERIOD: STATES AND TERRITORIES, AUSTRALIA.  
WORKING DAYS LOST PER THOUSAND EMPLOYEES FOR THE TWELVE MONTHS ENDED<sup>(a)</sup>

Period	NSW	Vic.	Qld	SA	WA	Tas.	NT	ACT	Australia
<i>Twelve months ended</i>									
<i>1990 --</i>									
December	283	226	111	236	200	67	26	62	217
<i>1991 --</i>									
December	528	128	114	112	223	28	51	18	265
<i>1992 --</i>									
December	85	369	69	25	97	285	48	20	158
<i>1993 --</i>									
February	89	371	76	28	90	278	48	20	159
March	107	422	78	41	80	277	37	20	179
April	105	419	76	41	75	230	29	10	175
May	101	431	77	45	68	107	26	5	174
June	91	438	83	48	55	41	28	7	170
July	97	449	87	51	61	47	45	8	177
August	104	465	111	55	65	46	45	8	188
September	119	463	141	62	63	47	38	15	197
October	120	493	141	68	67	57	38	77	208
November	90	182	131	55	54	56	37	76	112
December	89	170	132	53	51	29	38	76	108
<i>1994 --</i>									
January	89	170	130	52	52	29	38	76	108
February	98	165	132	49	55	29	41	80	110
March	93	109	143	36	54	30	42	80	94
April	98	109	149	37	53	35	48	82	97

(a) See paragraph 4 of the Explanatory Notes

TABLE 6. INDUSTRIAL DISPUTES ENDING IN THE 12 MONTHS TO APRIL 1994 : AUSTRALIA,  
REPORTED CAUSE, DURATION AND METHOD OF SETTLEMENT <sup>(a)</sup>

	Number of disputes <sup>(b)</sup>	Employees involved (directly and indirectly) ( '000)	Working days lost ( '000)
CAUSE OF DISPUTE			
Wages	46	24.5	34.4
Leave, pensions, compensation	21	5.5	10.9
Managerial policy	324	177.0	253.0
Physical working conditions	72	11.9	17.8
Trade unionism	64	9.8	9.1
Hours of work	5	12.9	3.4
Other <sup>(c)</sup>	28	142.2	265.6
<b>Total</b>	<b>560</b>	<b>383.9</b>	<b>594.2</b>
DURATION OF DISPUTE			
Up to and including 1 day	335	200.1	129.0
Over 1 and up to and including 2 days	116	106.5	155.8
Over 2 and less than 5 days	78	54.2	140.8
5 and less than 10 days	22	20.6	132.5
10 and less than 20 days	6	2.3	33.3
20 days and over	3	0.1	2.8
<b>Total</b>	<b>560</b>	<b>383.9</b>	<b>594.2</b>
METHOD OF SETTLEMENT			
Negotiation	116	54.6	97.1
State legislation	46	6.0	14.1
Federal and joint Federal-State legislation	79	58.7	205.2
Resumption without negotiation	313	263.7	275.6
Other methods	6	0.9	2.2
<b>Total</b>	<b>560</b>	<b>383.9</b>	<b>594.2</b>

(a) More detailed information by State and industry is available on request. (b) Prior to September 1991 disputes affecting more than one industry and/or State have been counted as separate disputes in each industry and State and in the Australian total. From that time such disputes, while still counted separately in each industry and/or State, are counted just once at the broader industry and Australian level. See paragraph 5 of the Explanatory Notes. (c) Includes disputes not elsewhere categorised

## EXPLANATORY NOTES

### Introduction

The statistics in this publication relate to disputes which involved stoppages of work of ten working days or more at the establishments where the stoppages occurred. Ten working days is equivalent to the amount of ordinary time worked by ten people in one day, regardless of the length of the stoppage. For example, 3,000 workers on strike for 2 hours would be counted as 750 working days lost (assuming they work an 8 hour day).

2. The statistics of working days lost relate to the losses due to industrial disputes only (as defined in paragraph 2 of the Glossary). Effects on other establishments, such as stand-downs because of lack of materials, disruption of transport services, power cuts, etc. are not included.

3. The statistics of industrial disputes are compiled mainly from data obtained from employers (both private and public sector), from trade unions and from reports of government authorities. Particulars of some stoppages, e.g. State or Australia wide general strikes may have been estimated and the statistics therefore should be regarded as giving only a broad measure of the extent of industrial disputes as defined above.

### Change in methodology

4. The basis for the calculation of working days lost per thousand employees was changed in January 1987 to include estimates of employees from the Survey of Employment and Earnings. They are combined with estimates of the number of employees in agriculture and in private households, obtained from the Labour Force Survey. Estimates have been recalculated on this basis for each month back to June 1984 and are available on request. In issues of this publication prior to January 1987, the estimates of numbers of employees were based entirely on Labour Force Survey data. The effect of the change is minimal at the 'all industries' level but is quite significant, in some cases, for individual industry groups.

5. The basis for the calculation of the number of disputes was changed in the November 1992 publication and the series revised back to September 1991. Prior to September 1991, disputes affecting more than one industry and/or State were counted as a separate dispute in each industry and State and in the Australian total. From September 1991 onwards, a dispute affecting more than one industry and/or State is counted once in each industry and/or State, but only once at the broader industry and Australia level. The reason for the change was to align the method of counting the number of industrial disputes with the International Labour Office guidelines. This change does not affect the estimates of employees involved or working days lost.

### Reliability of estimates

6. Inaccuracies may occur because of imperfections in information provided by respondents or in processing by the ABS. Although considerable care is taken in questionnaire design; in the instructions given to respondents; and in editing the returns; these inaccuracies may occur in any enumeration, whether it be a full count or a sample.

### Other ABS publications

7. Users may also wish to refer to the following publications:

*Industrial Disputes, Australia* (6322.0) - issued annually

*Labour Statistics, Australia* (6101.0) - issued annually  
*The Labour Force, Australia, Preliminary* (6202.0) - issued monthly

*The Labour Force, Australia* (6203.0) - issued monthly  
*Trade Union Statistics, Australia* (6323.0) - issued annually

*Trade Union Members, Australia, August 1992* (6325.0)

*Employed Wage and Salary Earners, Australia* (6248.0) - issued quarterly

*Award Rates of Pay Indexes, Australia* (6312.0) - issued monthly

### Unpublished statistics

8. A range of unpublished data is also available on request including dispute details at more detailed industry levels, cross-classified by State/Territories, and finer cause of dispute and method of settlement categories than those published. Considerable time series exist for most variables. Inquiries regarding data availability and the associated charges should be directed to Arvie Dobson on (03) 615 7492.

9. Current publications produced by the ABS are listed in the Catalogue of Publications and Products, Australia (1101.0). The ABS also issues, on Tuesdays and Fridays, a Publications Advice (1105.0) which lists publications to be released in the next few days. The Catalogue and Publications Advice are available from any ABS office.

### Symbols and other usages

r estimates revised since last issue  
- nil or rounded to zero

10. Where estimates have been rounded, discrepancies may occur between sums of the component items and totals.

### Electronic Services

#### DISCOVERY

The ABS intends discontinuing its statistical information service on DISCOVERY. Please contact Peter Davidson on (06) 252 6684 to discuss possible alternatives for acquiring statistics, or if you wish to comment on this proposal.

#### PC AUSSATS

Thousands of up-to-date time series are available on this on-line ABS service. For further information phone the PC-AUSSTATS Help Desk on (06) 252 6017

#### PC TELESTATS This service provides:

- foreign trade statistics tailored to users' requirements. Further information is available on (06) 252 5404.

- text and tables for selected Main Economic Indicator publications. Further information is available on (06) 252 5404.

#### Floppy disk service

selected ABS statistics are available on floppy disk. Further information is available on (06) 252 6684.

## GLOSSARY

**Cause of dispute**

The statistics of cause of industrial disputes relate to the reported main cause of stoppage of work and not necessarily all causes that may have been responsible for the stoppage of work. For these reasons, the statistics do not reflect the relative importance of all causes of disputes as perceived by both employers and employees. The causes are classified from information supplied by employers and according to standards determined by the International Labour Organisation. The classification of causes is as follows :

*Wages.* Claims involving general principles relating to wages e.g. increase (decrease) in wages; variation in method of payment or combined claims relating to wages, hours or conditions of work in which the claim about wages is deemed to be the most important. Combined claims in which the other claims are deemed to be the most important are included under the relevant clause. Disputes over award restructuring are included under managerial policy.

*Leave, pensions, compensation.* Claims involving general principles relating to holiday and leave provisions; pension and retirement provisions; workers' compensation provisions; insertion of penal clause provisions in awards.

*Managerial policy.* Disputes concerning the exercise of managerial control by employers, e.g. terms and conditions of employment (other than disputes specifically about wages and hours); new awards and agreements; award restructuring; work practices; principles of promotion or deployment of staff including roster complaints and retrenchments; disciplinary matters including alleged victimisation of union officials; employment of particular persons; disagreement with managerial decisions.

*Physical working conditions.* Disputes concerning physical working conditions and safety issues, e.g. protective clothing and equipment; first aid services; uncomfortable working conditions; lack of, or the condition of, amenities; claims for assistance; shortage or poor distribution of equipment or material; condition of equipment; new production methods and equipment; arduous physical tasks.

*Trade unionism.* Disputes concerning employment of non-unionists, inter-union and intra-union disputes; sympathy stoppages in support of employees in another industry; recognition of union activities.

*Hours of work.* Claims involving general principles relating to hours of work, e.g. decrease (increase) in hours; distribution of hours.

*Other.* Disputes concerning protests directed against persons or situations other than those relating to the employer/employee relationship, e.g. political matters; fining and goading of persons; lack of work; lack of adequate transport; non-award public holidays; accidents and attendance at funerals. Stoppages for which no reason is given are also included in this category.

**Disputes**

2. For these statistics, an *industrial dispute* is defined as a withdrawal from work by a group of employees, or a refusal by an employer or a number of employers to permit some or all of their employees to work, each withdrawal or refusal being made in order to enforce a demand, to resist a demand, or to express a grievance.

3. A dispute affecting several establishments is counted as a single dispute if it is organised or directed by one person or organisation; otherwise it is counted as a separate dispute at each establishment (in each State or Territory) and in each industry in which it occurred.

4. A dispute affecting more than one industry and/or State is counted once in each industry and State but only once at the broader industry and Australia level. Prior to September 1991 disputes covering more than one industry and/or State were counted differently (refer to paragraph 5 of the Explanatory Notes for details).

5. When there is a return to work between stoppages over the same issue, and the return to work is for less than two complete months, the stoppages are counted as a single dispute. When the return to work is for two or more months, the dispute is considered to have ended at the time of the return to work. Should a subsequent stoppage occur, it is counted as a new dispute.

6. Information is recorded concerning all industrial disputes where ten or more working days are lost (see paragraph 1 of the Explanatory Notes). Included in these statistics are the following types of industrial disputes:

- unauthorised stopwork meetings;
- unofficial strikes;
- sympathetic strikes (e.g. strikes in support of a group of workers already on strike);
- political or protest strikes;
- general strikes;
- work stoppages initiated by employers (e.g. lockouts); and
- rotating or revolving strikes (i.e. strikes which occur when workers at different locations take turns to stop work).

Excluded from these statistics are work-to-rules, go-slows, bans (e.g. overtime bans) and sit-ins. In addition, industrial disputes in which employees resign are deemed to have been resolved. Statistics on those disputes will cease to be collected from the date of the employees' resignations.

**Disputes which occurred during the period**

7. *Disputes which occurred during the period* encompasses those disputes which:

- . started in a previous month or year and ended in the reference period, or
- . began and ended in the reference period, or
- . began in the reference period and continued into the next period, or
- . started prior to the reference month or year, continued through the reference period and into the next period.

#### Duration of dispute

8. The *duration* of a dispute is the average number of working days lost per employee involved in the dispute. The duration of the dispute is calculated by dividing the number of working days lost in the dispute by the number of employees involved (both directly and indirectly).

#### Employees

9. *Employees* refers to wage and salary earners only. Excluded are persons who are self-employed (e.g. building sub-contractors, owner-drivers of trucks) and employers.

10. *Employees directly involved* are those who actually participated in the dispute in order to enforce or resist a demand or to express a grievance.

11. *Employees indirectly involved* are those who ceased work at the establishment where the stoppages occurred, but who are not themselves parties to the dispute. Employees who ceased work at establishments other than those where the stoppages occurred are excluded (see paragraph 2 of the Explanatory Notes).

12. *Total employees involved* for any period of time are obtained by adding together the number of employees involved in each dispute in the period. For any period of time the figures may include details of the same employees involved in more than one dispute. The longer the period of reference, the more chance there is of some double counting in the number of employees involved. Where there are varying numbers of employees involved during the progress of a dispute, the figures of employees involved relate to the largest number of individual employees involved on any one day. Generally, the *total* number of employees involved for each year will equal the sum of the total number of employees involved in the first month of a year plus the number of employees *newly* involved in subsequent months. Differences between monthly and annual totals can occur due to the temporary cessation of stoppages which resume in subsequent months. Employees re-involved in this type of dispute are not classified as employees *newly* involved in stoppages in the second period in which the dispute occurs.

#### Method of settlement

13. Statistics of the *method of settlement* of industrial disputes relate to the method directly

responsible for ending the stoppage of work as reported and not necessarily to the method (or methods) responsible for settling all matters in dispute. For these reasons, they do not reflect the relative importance of the work of various industrial tribunals operating under State and Federal legislation. The classification of method of settlement is as follows:

*Negotiation.* Private negotiation between the parties involved, or their representatives, without the intervention or assistance of authorities constituted under State or Federal industrial legislation.

*State legislation.* Intervention or assistance of an industrial authority or authorities created by or constituted under State conciliation and arbitration or wages board legislation, or reference to such authorities or compulsory or voluntary conference. Intervention, assistance or advice of State government officials or inspectors.

*Federal and joint Federal-State legislation.* Compulsory or voluntary conference or by intervention or assistance of, or reference to, the industrial relation commissions created by or constituted under the Industrial Relations Act, Coal Industry Acts, Stevedoring Industry Act, and other acts such as the Navigation Act, Public Service Arbitration Act. Intervention, assistance or advice of Federal government officials or inspectors.

*Resumption without negotiation.* This category may include some disputes which are settled subject to subsequent negotiation of a formal nature, such as industrial court hearings. Stop-work meetings are included, and this category may also include disputes settled by 'resumption' as stated, but about which no further information is available.

*Other methods.* Mediation; filling places of employees on strike or locked out; closing establishments permanently; dismissal or resignation of employees.

#### Working days lost

14. *Working days lost* refers to working days lost by employees directly and indirectly involved in the dispute and figures are generally as reported by parties to the dispute. For some disputes working days lost are estimated on the basis of the number of employees involved and the duration of the dispute.

#### Working days lost per thousand employees

15. *Working days lost per thousand employees* are calculated for the 12 month period from working days lost and estimates of employees obtained from the ABS Survey of Employment and Earnings and the ABS Labour Force Survey. Refer to paragraph 4 of the Explanatory Notes for details of the way in which these measures are calculated, and the change in the method of calculation from 1987.

